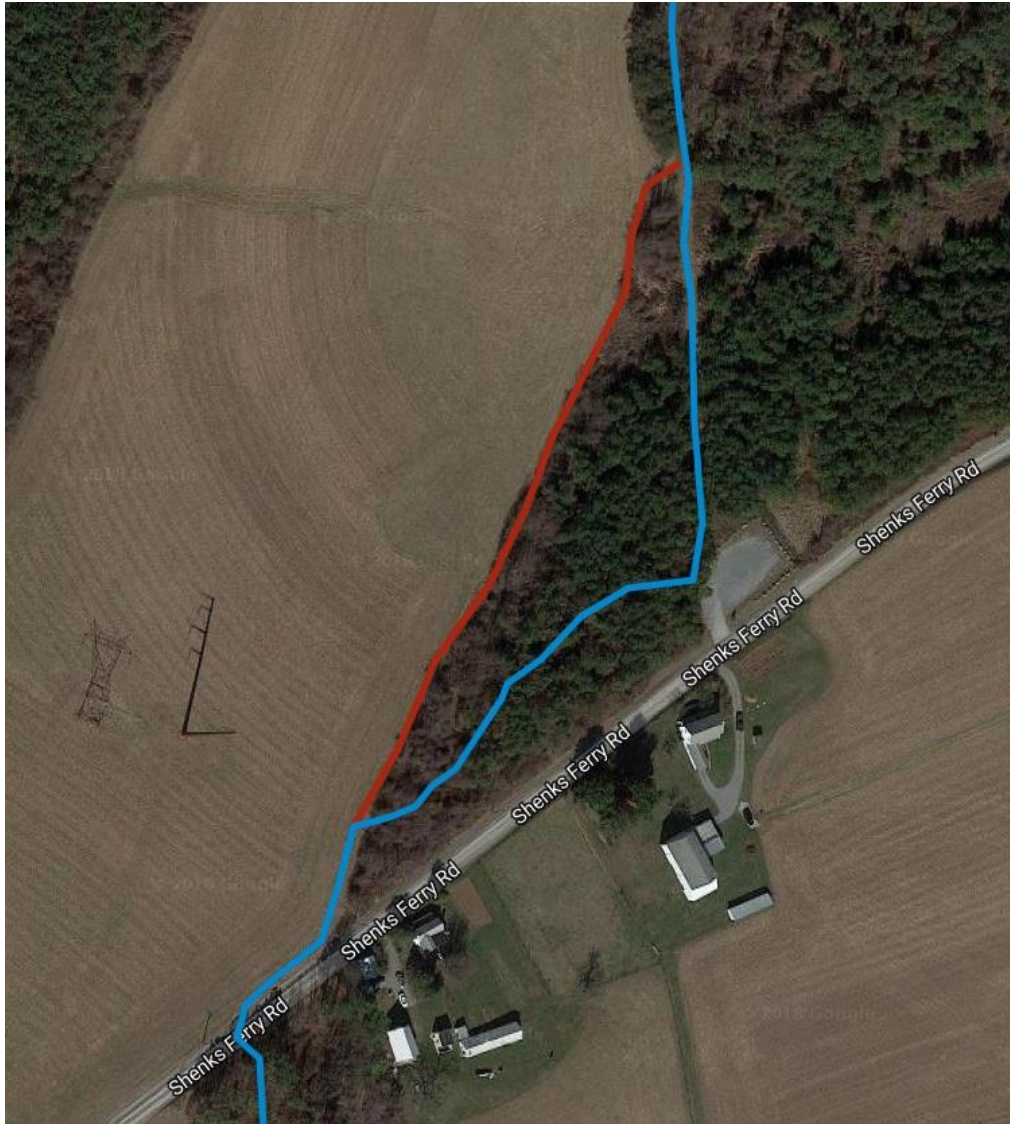


MAP 4: Shenks Ferry Road Relocation (Aug. 2018)



West to East

13.5 mi Turn right out of woods and almost immediately turn left to follow the edge of the power line. Continue to the parking lot. At the gate turn right into the woods. At the field turn left, walk to the road, turn right and walk to the post.

Continue with Map 4 directions at 14.0 mi

East to West

5.3 mi Cross Shenks Ferry Rd into Apollo County Park. *No camping allowed in Apollo County Park except at the shelter (see below).* Climb the bank to the edge of field, then turn right, walk to the woods, turn left and go 150'. Turn right into the woods. At the parking lot, turn left. Follow the logging road up and over the hill to the end of the farmers field.

Continue with Map4 directions at 5.8 mi