

## *Historical Sites Along the Trail* **Wrightsville End of Canal**

**MDT Map 3** | Mile 13.3 W→E; 3.6 E→W

**T**he last two newsletters had articles about the canal at the start in Havre de Grace and at the Norman Wood Bridge. There were twenty-eight locks on the river.

South of Wrightsville, there is a stretch of the canal called Long Level, a five-mile stretch that did not contain any locks. The trail is on the road in several places along Long Level where remnants of the canal can be seen.

When one reaches Lockwood Dr, the only double lock on the canal is down river from where the trail is on the road. There was also a turn around basin so that the boats could be sent in the opposite direction.

The upriver end of the canal was in Wrightsville. In Wrightsville, the canal boats entered the river through a guard lock (under the present Route 462 bridge) that was used to control the water flow into the canal. The boats were towed across the river by mules on a double-deck towpath on the old bridge. In Columbia, there was

another canal on the east side of the river that went up river to the Juniata. After the bridge was burned in the civil war, a steam powered tug

pulled the boats across the river. During the boom years Wrightsville was a transshipment point for lumber and coal.



*Wrightsville end of canal*

## **Mason-Dixon Quarterly Meeting and Work Hike**

**Quarterly  
Work Hike  
and Meeting**  
Sat, June 23, 2012

*Hike:*  
9:30 am  
*Meeting:*  
1:00 pm

We will meet on Saturday, June 23rd for a work hike at 9:30 am and will follow with a meeting at 1:00 pm. Work involves placing posts and marking the route in State Line Woods. If we have enough time, we will explore Auburn 2 for the possibilities for a new relocation.

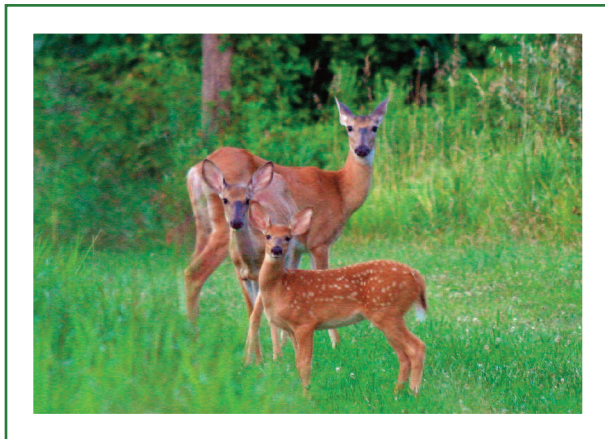
The rendezvous location will be the Center for the Creative Arts (CCArts). It was formerly known as the Yorklyn School. State Line Woods is a 5 minute walk from CCArts. CCArts is located at 410 Upper Snuff Mill Row in Yorklyn, DE. Please call Kathy Dempsey at (302) 547-3596 if you need help finding CCArts.



## As Seen Along the Trail

**Photos by John Beatty**

As you hike the Mason-Dixon Trail, keep your eyes open for the many varieties of plants growing nearby. Also watch the skies and forests for signs of wildlife—both large and small. Enjoy these photos taken by John Beatty, who frequently walks the trail taking pictures of all the wonderful sites he comes across.



# President's Message

## HERITAGE PARKS

The M-DTS goes through the Heritage Park area that includes Wilton Meadows, High Point County Park, Klimes Run and Native Lands County Park. The first meeting between the steering committee with the contractor developing master plans for the Susquehanna Heritage Park was held. Public meetings will be held to solicit input on the plans on June 19 at 7 pm at the Lower Windsor Township Building.

## HARFORD COUNTY QUARRY

Maryland's DNR is meeting with the quarry owners, Vulcan Mining Company, to plan a trail around the quarry. No details are available at this time.

## EXELON

Exelon came up with a draft recreation plan that did not include the relocations that we have proposed. I have been unable to find out what happened. It is hard to understand since we will be doing the building and are not asking for any funding. M-DTS submitted a comment letter on the missing items to keep the subjects on the table.

We have been asked by Exelon to rebuild a bridge at Broad Creek. Exelon will supply the material and the M-DTS will supply the manpower and tools. We need to borrow a generator for the effort. If someone has one we can borrow, please contact me.

## KTA

The Keystone Trails Association represents us in Harrisburg. They represent us with the PA congressmen and both DCNR and the Game Commission. In addition, the initial funds to establish the M-DTS were donated by the KTA. They are running in the red so are asking for more money. If you are not an individual member, please consider joining. The KTA Susquehanna Super Hike is Sept. 8th. Some of the people who normally help with the hike will not be available this year. Please contact Paul Yatabe at [pyatabe61@gmail.com](mailto:pyatabe61@gmail.com) if you want to help.

## BLAZING

I have been getting complaints about not being able to follow the trail. Often we know the trail so well that we do not realize that the blazes are hard to follow. We follow the ATC standards for blazing with 2x6 inch vertical blue blazes. For a turn we use off set blazing with the top blazes offset in the direction of the turn. A blaze should be visible just after making the turn so people can confirm they are going in the correct direction. We have been using Martin Senour exterior acrylic paint, Electric Blue, color 157-5, finish 12310.5. It has been holding up good. Our original paint faded to white and should be avoided.

## MASON-DIXON TRAIL SYSTEM LEADERSHIP

### President

Jim Hooper  
309 Bank Hill Rd., Wrightsville, PA 17368  
(717) 252-3784  
[j.e.hooper@ieee.org](mailto:j.e.hooper@ieee.org)

### Vice President

Ron Gray  
640 Sterling Drive, Red Lion, PA 17356  
(717) 244-8040  
[ronaldgray@comcast.net](mailto:ronaldgray@comcast.net)

### Secretary

Rob Campbell  
811 Marvell Dr., York, PA, 17402  
(717) 840-4482  
[rbc1@psu.edu](mailto:rbc1@psu.edu)

### Treasurer

Rick Maerker  
13 Denise Dr., Thornton, PA 19373  
(610) 459-3203  
[merk@ccil.org](mailto:merk@ccil.org)

### Director - Pennsylvania

Tim Schmidt  
1803 Orwig Rd., New Freedom, PA 17349  
(717) 235-5940  
[wanderfool@comcast.net](mailto:wanderfool@comcast.net)

### Director - Maryland

Cindy Kelly  
117 Francis St., Havre de Grace, MD 21078  
(410) 939-5029  
[cl\\_kelly@comcast.net](mailto:cl_kelly@comcast.net)

### Director - Delaware

Yvonne Blades  
56 Crosslands Dr., Kennett Square, PA 19348  
(610) 388-1871  
[hyblades@verizon.net](mailto:hyblades@verizon.net)

### Newsletter Editor

Tony Nardi  
2204 Cantley Dr., Forest Hill, MD 21050  
(410) 893-5382  
[anthonywardi@hotmail.com](mailto:anthonywardi@hotmail.com)

## TRAIL COORDINATORS

### Western Section

Skip Newcomer  
P.O. Box 8228, Lancaster, PA 17604  
[skipnewc@hotmail.com](mailto:skipnewc@hotmail.com)

### Central Section

Ron Green  
2893 Yost Ct., Edgewood, MD 21040  
(443) 655-6358  
[rgreen@chimera-enterprises.com](mailto:rgreen@chimera-enterprises.com)

### Eastern Section - Cecil County

Keith Williams  
131 Skyline Drive, Conowingo, MD 21918  
(443) 206-2923  
[kwilliams@northbayadventure.com](mailto:kwilliams@northbayadventure.com)

### Eastern Section - Delaware

Vacant

## TRAIL UPDATES

### NEW PARKING LOT

Susquehannock State Park has built a new parking lot to provide access to Urey Overlook. It is on Map 4, mile 16, where the trail crosses Rt 425. In addition, they have added a picnic table at Urey Overlook.



## MASON-DIXON TRAIL SYSTEM

Rob Campbell, *Secretary*  
811 Marvell Drive  
York, Pennsylvania 17402

### KEEP AN EYE ON THE TRAIL!

You never know what might wander in front of your path as you hike along the trail! These are only some of the many xing signs posted along the trail. What other ones have you seen on your journeys?



### CHARLIE AMENT

Charlie Ament, a long time maintainer of the Apollo Park section of the trail, passed away. Charlie worked at the Safe Harbor dam. He also helped Ron Gray lead "Ron's Dam" hike which involved hiking the Mason Dixon Trail in Apollo Park, hiking across the dam to get a tour of the power plant and then hiking back with the hike ending at the York Hiking club cabin for a dinner. Charlie is going to be missed. Our condolences to the family.

If anyone wants to volunteer to take over his section, they should contact Skip Newcomer.

The M-DTS Newsletter is published about four weeks in advance of each of the four M-DTS board meetings held annually. Submissions are welcomed.

The Mason-Dixon Trail System, Inc. is a non-profit all-volunteer, service-oriented association of trail clubs and individual hikers that has as its purpose the use and conservation of the backcountry through the development of new trails in the mid-Atlantic states. The nucleus of M-DTS is the 193-mile Mason-Dixon Trail which passes through historic and scenic areas of Pennsylvania, Maryland and Delaware.

New members are welcome. To join, send \$25 (which covers cost of M-DT maps and patch) to:

**Mason-Dixon Trail System**

**Rick Maerker**

**13 Denise Drive**

**Thornton, PA 19373**

Thereafter, the annual fee is \$7. Life membership is available for \$250.

**Visit the Mason-Dixon Trail web site at: [www.masondixontrail.org](http://www.masondixontrail.org)**